



WALL WASHERS - WALL GRAZERS

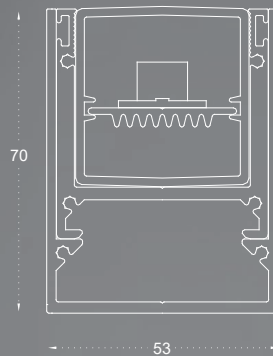
linear-in 53x70



## LINEAR-IN 53X70MM

'WALL GRAZING' are ideal for the illumination of large surfaces. They can be used in public cultural buildings, museums and galleries. It is a tool mainly used by lighting designers to display surfaces of buildings or architectural structures.

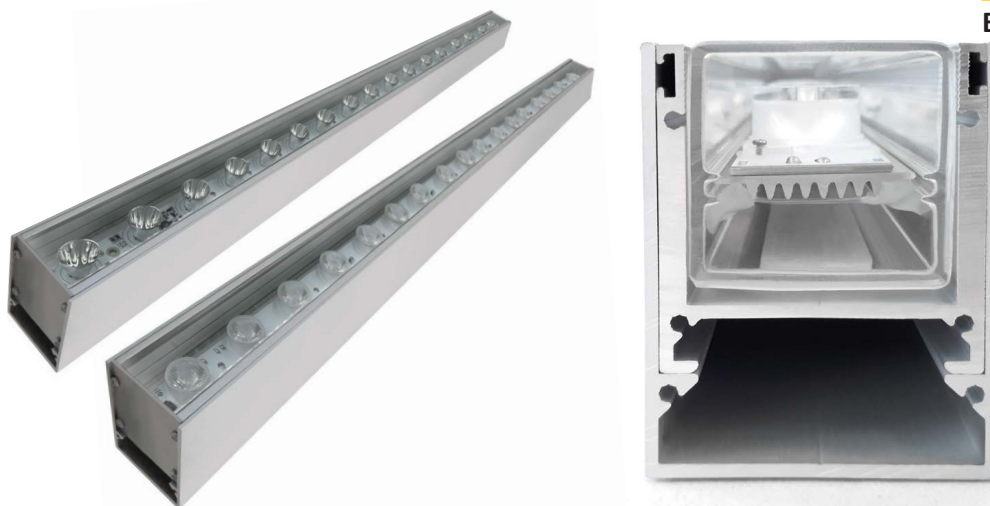
Τα 'WALL GRAZING' είναι ιδανικά για το φωτισμό μεγάλων επιφανειών. Μπορούν να χρησιμοποιηθούν σε δημόσια πολιτιστικά κτίρια, μουσεία και galleries. Είναι ένα εργαλείο που χρησιμοποιείται κυρίως από τους σχεδιαστές φωτισμού για να αναδείξουν επιφάνειες κτιρίων ή αρχιτεκτονικές κατασκευές.



0cm 30cm 60cm 90cm 120cm 150cm 180cm 210cm 240cm 270cm 300cm



# LINEAR - IN 53x70mm



## general information

|                   |                           |
|-------------------|---------------------------|
| application       | Outdoor / Ground          |
| ip classification | IP65 / IP67 / IP68        |
| ik classification | IK10                      |
| material          | Aluminium / Polycarbonate |
| incl. cable       | Yes                       |
| life time         | 30.000 hrs                |
| warranty          | 2 years                   |
| dimnable option   | PWM                       |
| voltage           | 24VDC                     |
| connection type   | Parallel                  |
| origin            | Made in Greece            |

## glass cover

|          |               |
|----------|---------------|
| inclosed | Polycarbonate |
|----------|---------------|

## cut-out dimensions

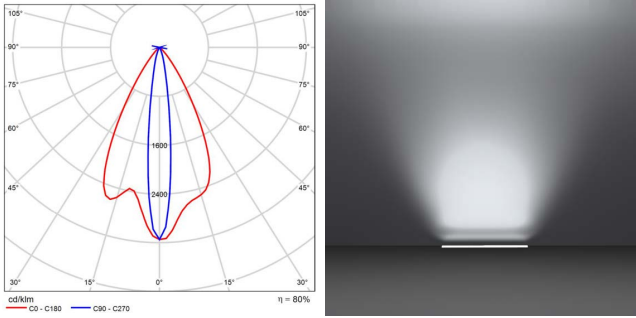
|         |       |
|---------|-------|
| WxD(mm) | 58x75 |
|---------|-------|

| LINEAR - IN 53x70mm          |                         | CODE SELECTION BOARD |              |                |      |                |                          |
|------------------------------|-------------------------|----------------------|--------------|----------------|------|----------------|--------------------------|
| BEAM ANGLE  <br>γωνία δέσμης | WATTAGE                 | LENGTH   μήκος       | CCT          | IP             | CRI  | VOLTAGE        | SHADOW                   |
| 10x55D                       | (3W) / (6W) / (9W)      | 0.30m (030)          | 2700K(27K)   | IP65<br>(65)   | * 80 | 230VAC<br>(23) | * WITH<br>SHADOW<br>(SH) |
|                              | (6W) / (12W) / (18W)    | 0.60m (060)          | * 3000K(30K) |                |      |                |                          |
| * 10x110D                    | (9W) / (18W) / (27W)    | 0.90m (090)          | 4000K(40K)   | * IP67<br>(67) | 90   | * 24V<br>(24)  | WITHOUT<br>SHADOW<br>(-) |
|                              | * (12W) / (24W) / (36W) | * 1.20m (120)        | 6000K(60K)   |                |      |                |                          |
| 10D                          | (15W) / (30W) / (45W)   | 1.50m (150)          | RED(R)       | IP68<br>(68)   |      |                |                          |
|                              | (18W) / (36W) / (54W)   | 1.80m (180)          | GREEN(G)     |                |      |                |                          |
| 25D                          | (21W) / (42W) / (63W)   | 2.10m (210)          | BLUE(B)      |                |      |                |                          |
|                              | (24W) / (48W) / (72W)   | 2.40m (240)          | AMBER(A)     |                |      |                |                          |
| 30D                          | (27W) / (54W) / (84W)   | 2.70m (270)          | RGB(RGB)     |                |      |                |                          |
| ASYMMETRICAL<br>(ASYM)       | (30W) / (60W) / (90W)   | 3.00m (300)          |              |                |      |                |                          |

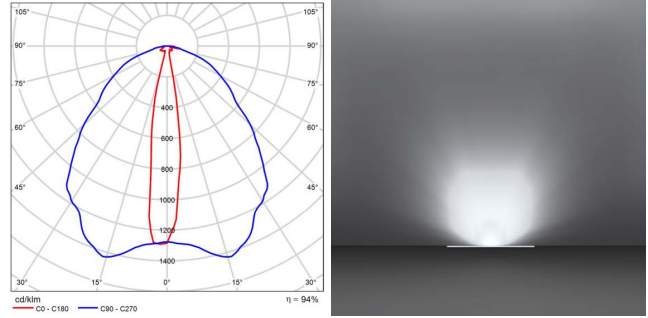
CODE EXAMPLE : 10X110D-12W-120-30K-67-80-24-SH



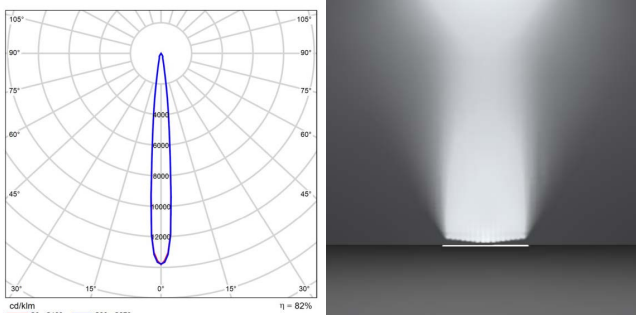
PHOTOMETRIC DIAGRAM



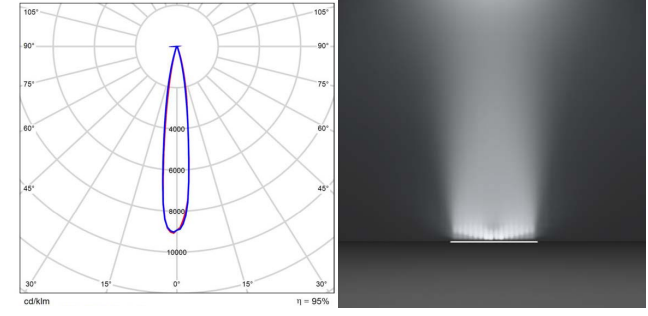
10x55D



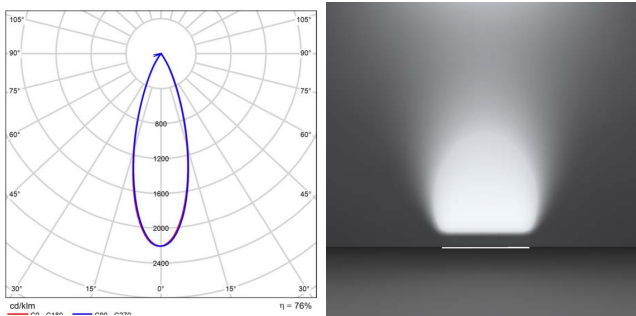
10x110D



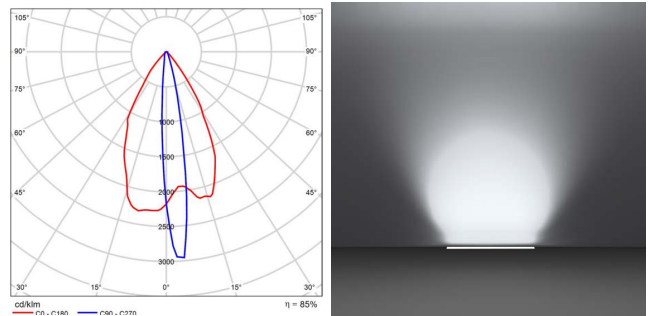
10D



25D



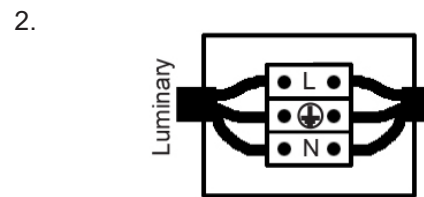
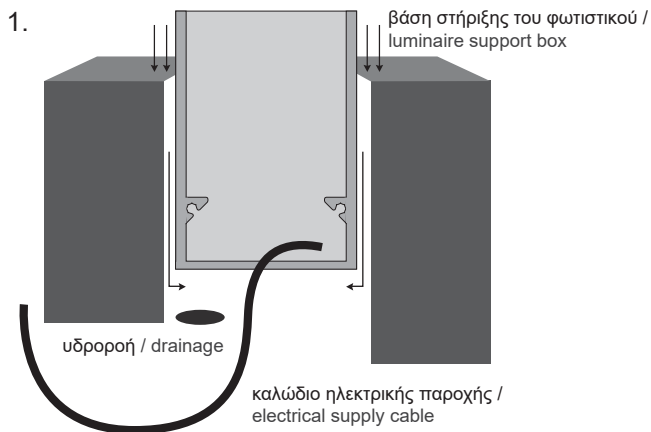
30D



ASYM

## ΟΔΗΓΙΕΣ ΕΓΚΑΤΑΣΤΑΣΗΣ // INSTALLATION INSTRUCTIONS

1. ΠΡΟΕΤΟΙΜΑΣΙΑ ΤΟΥ ΕΔΑΦΟΥΣ ΚΑΙ ΤΟΠΟΘΕΤΗΣΗ ΤΗΣ ΒΑΣΗΣ ΤΟΥ ΦΩΤΙΣΤΙΚΟΥ / PREPARATION OF TERRAIN AND APPLYING OF THE LUMINAIRE BASE.
2. ΚΑΝΕΤΕ ΤΗΝ ΗΛΕΚΤΡΙΚΗ ΣΥΝΔΕΣΗ / MAKE THE ELECTRICAL CONNECTION
3. ΤΟΠΟΘΕΤΗΣΗ ΤΟΥ ΦΩΤΙΣΤΙΚΟΥ / PLACE THE LUMINAIRE



Συνδέστε το καλώδιο του φωτιστικού με την ηλεκτρική παροχή.  
Η σύνδεση πρέπει να είναι στεγανή.  
Connect the cable of the luminaire with the electrical supply.  
The connection must be sealed.

## APPLICATION

