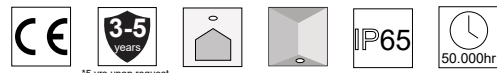


# OVAL BRANCH 3L 39x150 WALL

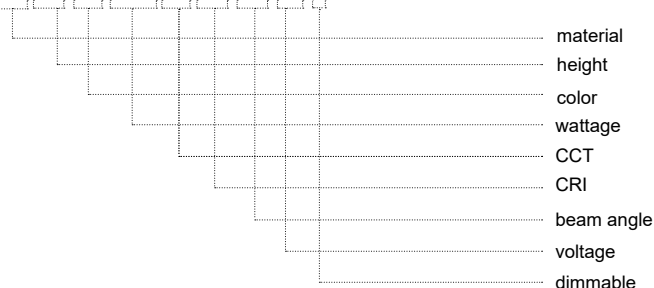


## ΠΕΡΙΕΧΟΜΕΝΑ / CONTENT

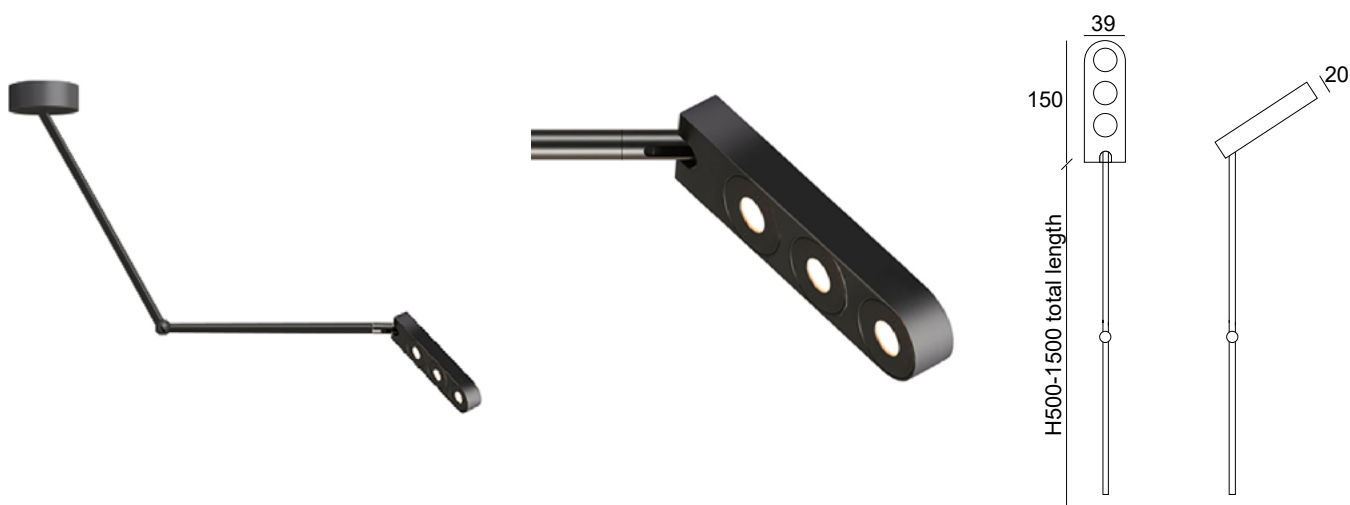
datasheet	1
manual	2

## ΚΩΔΙΚΟΣ / CODE

OV3BRW- XX XX XX XXX XX XX XX XX X



## OVAL BRANCH 3L 39x150 WALL ( OV3BRW-) / Datasheet



### general information

application	Outdoor / Ceiling / Wall
electric gear	Not included
lamp type	LED
life time	50.000 hrs
warranty	3-5 years
origin	Made in Greece

material	height	color	wattage	CCT	CRI	beam angle	voltage	dimmable
Aluminium (01)	500 (H500)	Anodised (AL)	3W (3W)	2700K (27K)	Ra80 (80)	8° (8D)	12VDC (V1)	Yes (D)
Brass (03)	1000 (H1000)	Black (BL)	6W (6W)	3000K (30K)	Ra90 (90)	10° (10D)	24VDC (V2)	No (L)
	1500 (H1500)	White (WH)	9W (9W)	4000K (40K)		15° (15D)	230VAC (V3)	
		More RALs (RL)		5000K (50K)		20° (20D)		
		No color (L)		6000K (60K)		24° (24D)		
				(R) / (G) / (B) / (AM)		35° (35D)		
						60° (60D)		
						80° (80D)		
						15x35° (1535D)		

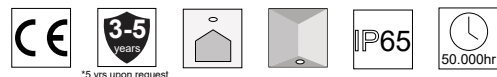
Product code generator

**OV3BRW - material - height - color - wattage - CCT - CRI - beam angle - Voltage - dimmable**

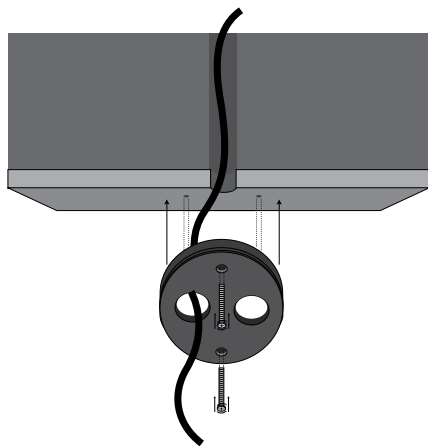
(ex. OV3BRW01H500BL3W27K8015DV1D) for Oval Branch 3L Wall 39x150 Aluminium 500mm Black 3W 2700K Ra80 15° 12V

Dimmable

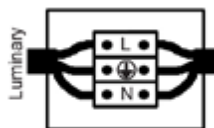
# OVAL BRANCH 1L 39x150 / Manual



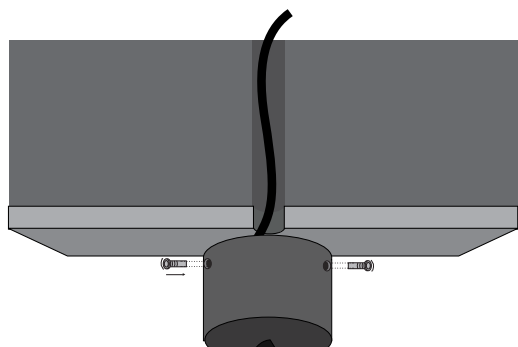
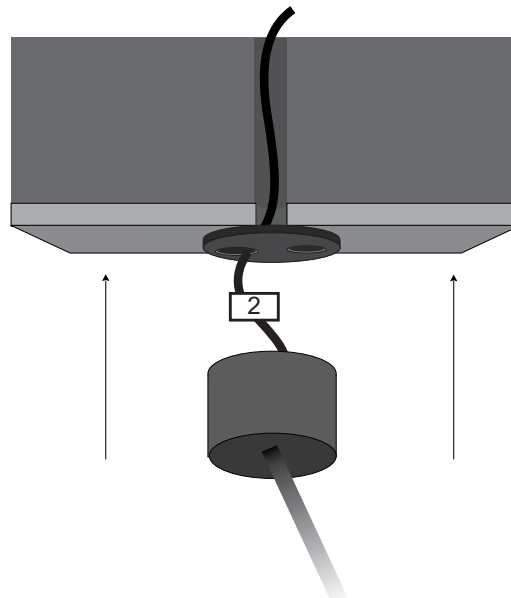
1. Τοποθετήστε τη βάση στην οροφή. / Place the base on the ceiling.



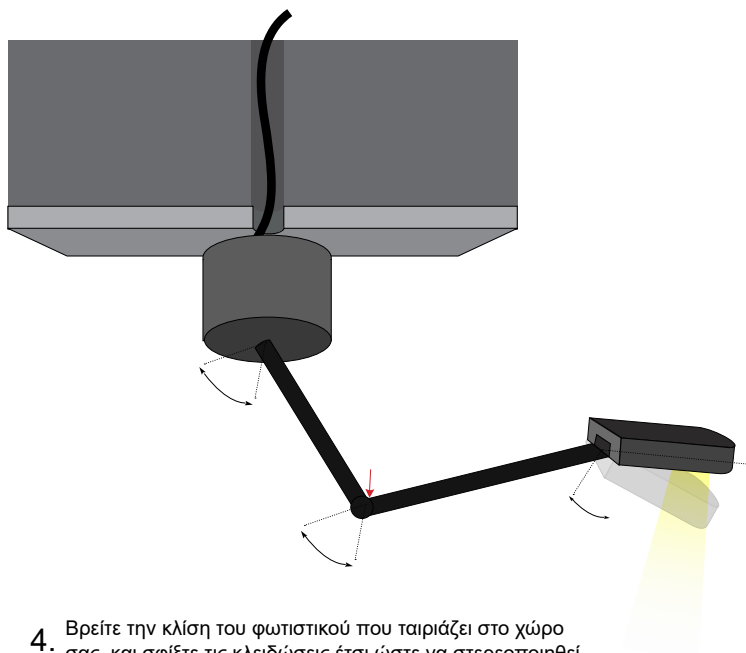
2.



Συνδέστε το καλώδιο του φωτιστικού με την ηλεκτρική παροχή. Η σύνδεση πρέπει να είναι στεγανή. / Connect the cable of the luminaire with the electrical supply. The connection must be sealed.



3. Βιδώστε το φωτιστικό στη βάση. / Skrew the luminaire on the base.



4. Βρείτε την κλίση του φωτιστικού που ταιριάζει στο χώρο σας, και σφίξτε τις κλειδώσεις έτσι ώστε να στερεοποιηθεί. Το φωτιστικό είναι έτοιμο για χρήση. Find the suitable angle for the luminaire according to the space, and tighten the locks until it stabilizes. Luminaire is ready for use.