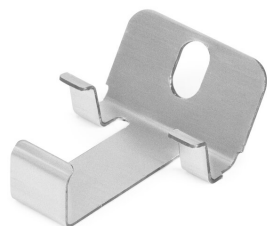


Mounting bracket PDS-STN-60D

Ref. C24457N00

Ref. arch 24457

NEW



- Lighting direction of the fixture at an angle of 60 degrees to the surface
- The position can be corrected after screwing into place
- High mechanical and weather resistance

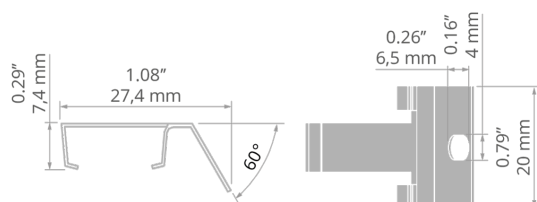
APPLICATION

- for mounting LED lighting fixtures

MOUNTING

- to the surface, using properly selected screws
- to the lighting fixture, with hooks
- easy installation and deinstallation of lighting fixtures by snapping in and out

TECHNICAL DRAWING



TECHNICAL SPECIFICATIONS

Material	stainless steel
Color	silver
Width	20 mm

Height	12.5 mm
Lifting capacity	7.5 kg

SAMPLE PROJECTS



Mounting bracket PDS-STN-60D

Ref. C24457N00

Ref. arch 24457

RELATED PROFILES > ARCHITECTURAL



REGULATOR

A18068

Ref. arch B468+43

RELATED PROFILES > UNIVERSAL



45-16

A08504

Ref. arch B8504



MICRO-PLUS

A02966

Ref. arch C2966



PDS-4-PLUS

A01263

Ref. arch C1263



TAMI

A05390

Ref. arch B5390



TAPO

A01919

Ref. arch C1919