

LED STREET LIGHT SLNX 30-200W



Description

The ST71 is a sleek and lightweight streetlight with a minimalist design, featuring a lamp body made of ADC12 aluminum alloy. The cover opens from the top, allowing for tool-free access and easy maintenance. Equipped with a power cut-off switch, the light automatically disconnects when the cover is opened, minimizing the risk of electric shock during maintenance. The built-in spirit level ensures proper alignment during installation. The ST71 is compatible with 60mm and 76mm poles, and can be installed both horizontally and vertically, with an adjustable angle range of -15° to $+15^{\circ}$. A 3PIN NEMA photocell base is available as an option, further enhancing smart control and energy-saving capabilities, making it an ideal solution for modern street lighting applications.

Key Features

- Light efficiency up to 150lm/W
- IP66 and IK09 rated
- Minimalist and slim design
- Tool-free opening
- Equipped with power cut-off switch and built-in level

Applications



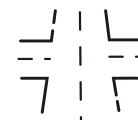
Routes/Country Road



Roadways & Residential streets



Highways/Main streets



Road Intersections



Non-Motorized Vehicles and Sidewalk Lighting



Open Car Parks



Plazas/Square lighting



Outdoor Industrial and Logistics Areas

LED STREET LIGHT SLNX 30-200W

FUNCTION TABLE

Suffix	0-10V dim with Zhaga book 18 receptacle	DALI dim	NEMA	Example 40W
/K	-	-	✓	ST71-040/K
/J	✓	-	-	ST71-040/J
/D	-	✓	-	ST71-040/D

GENERAL INFORMATION

Housing materials	Aluminum alloy
Housing finish	Powder coating
Optic materials	Polycarbonate
Fixture color	Silver Grey(RAL9006)
Electrical class	Class I
CCT selection DIP switch	NO
Power selection DIP switch	NO
Emergency	NO
Sensor	NO
Light source SDCM	<5
Impact resistance	IK09
Ingress protection	IP66
Category of corrosion	C3(ISO 9223:2012)
Certification	CE/RoHS/RCM/ENEC
Warranty(years)	5

LED STREET LIGHT SLNX 30-200W

TECHNICAL DATA

Eco version: ON/OFF function

Code	ST71-030	ST71-040	ST71-050	ST71-075	ST71-100	ST71-120	ST71-150	ST71-180	ST71-200	
Nominal wattage(W) ±5%	30	40	50	75	100	120	150	180	200	
Driver type	Constant current(CC)									
Control	ON/OFF									
Nominal input voltage(V)	120-277Vac, 50/60Hz									
Power factor(at full load)	>0.97									
Flicker factor	<34%	<40%	<0.3%							
THD	<12%@220V									
Surge protection	4KV L-L, 6KV L-E			6KV L-L, 6KV L-E						
Light source	LED 3030									
Color rendering index	Ra70									
General luminous efficacy (lm/W)	150lm/W@4000K Ra70									
Color temperature(K)	1-CCT: 3000K/4000K									
Luminous flux(lm) ±10% Ra70	1-CCT	4150-4460	5342-5774	6968-7585	10626-11544	14661-15647	17264-18549	21792-23431	25981-280021	29011-31128
Beam angle	R01602/R01603/R01610									
Luminaire windage area(SCx)(m²)	at 0°	0.07	0.1	0.13	0.14	0.16				
Operating temperature(°C)	-30 to +50									
Lifespan of LED@Ta=25°C (hrs)	54,800-L90B50			52,700-L90B50			50,400-L90B50			
	109,400-L80B50			106,400-L80B50			102,900-L80B50			
	171,700-L70B50			165,000-L70B50			162,600-L70B50			

LED STREET LIGHT SLNX 30-200W

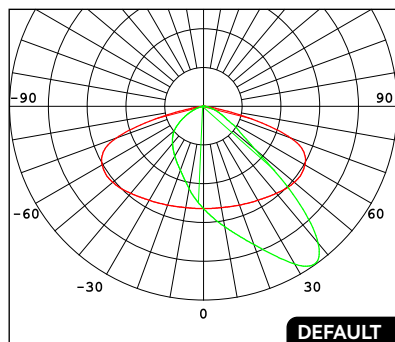
Premium version: ON/OFF function with 3-PIN NEMA socket

Code	ST71-020/K	ST71-040/K	ST71-050/K	ST71-075/K	ST71-100/K	ST71-120/K	ST71-150/K	ST71-180/K	ST71-200/K	
Nominal wattage(W) ±5%	20	40	50	75	100	120	150	180	200	
Driver type	Constant current(CC)									
Control	ON/OFF									
Nominal input voltage(V)	220-240Vac, 50/60Hz									
Power factor(at full load)	>0.9			>0.95						
Flicker factor	<0.3%	<0.5%	<0.3%	<0.5%			<0.3%			
THD	<12%@220V			<15%						
Surge protection	4KV L-L, 6KV L-E			6KV L-L, 10KV L-E						
Light source	LED 3030									
Color rendering index	Ra70									
General luminous efficacy (lm/W)	150lm/W@4000K Ra70									
Color temperature(K)	1-CCT: 3000K/4000K									
Luminous flux(lm) ±10% Ra70	1-CCT	2737-2867	5507-5767	7039-7352	10480-10974	14104-14707	17009-17933	21367-22535	25350-26687	28166-29652
Beam angle	R01602/R01603/R01610									
Luminaire windage area(SCx)(m²)	at 0°	0.07		0.1		0.13		0.14		0.16
Operating temperature(°C)	-30 to +45			-30 to +50						
Lifespan of LED@Ta=25°C (hrs)	54,800-L90B50					52,700-L90B50		50,400-L90B50		
	109,400-L80B50					106,400-L80B50		102,900-L80B50		
	171,700-L70B50					165,000-L70B50		162,600-L70B50		

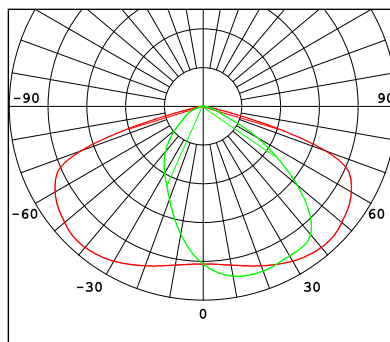
LED STREET LIGHT SLNX 30-200W

OPTICS

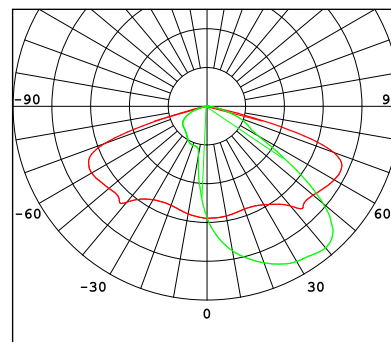
RECOMMENDED



Asymmetrical intense 35°
R01610

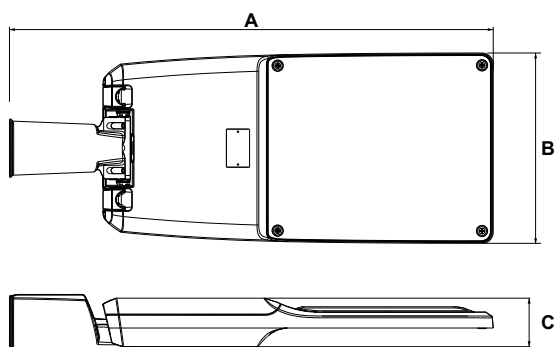


Asymmetrical intense 30°
R01602



Asymmetrical intense 40°
R01603

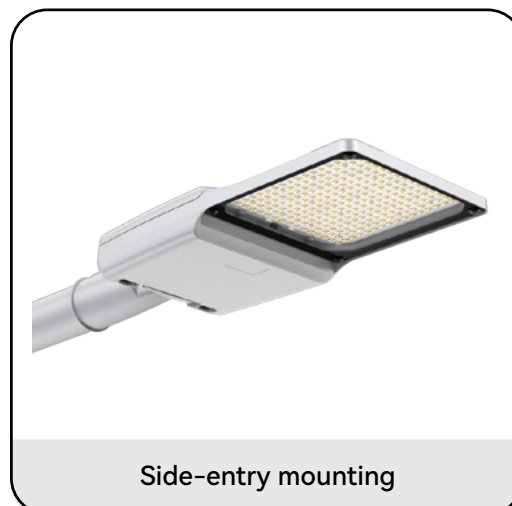
MEASUREMENT



Product code	Luminaire dimensions AxBxC(mm)	Product weight(kg) ±6%		Carton size(mm)	Qty/CTN
		N.W/PC	G.W/PC		
ST71-020	448x190x65	2.4	3	460x220x150	1
ST71-030					
ST71-040					
ST71-050	543x204x65	3.2	3.8	555x235x145	
ST71-075					
ST71-100	553x253x65	4.2	4.9	565x285x130	
ST71-120					
ST71-150	599x253x65	4.4	5.1	610x285x130	
ST71-180					
ST71-200					

LED STREET LIGHT SLNX 30-200W

MOUNTING OPTIONS



ACCESSORIES

Photocell



Code	Product weight(kg) ±6%		Package weight(kg) ±6%		Carton size (mm)	Qty/CTN
	N.W/PC	G.W/PC	N.W/CTN	G.W/CTN		
PS-A00-01	0.11	0.13	12.5	13.6	440x440x345	100

76mm spigot



Code	Product weight(kg) ±6%		Package weight(kg) ±6%		Carton size (mm)	Qty/CTN
	N.W/PC	G.W/PC	N.W/CTN	G.W/CTN		
SP-R54-02	0.48	0.52	46.8	47.8	320x320x190	9

L shape adaptor for dia.60 spigot, 76mm pole



Code	Product weight(kg) ±6%		Package weight(kg) ±6%		Carton size (mm)	Qty/CTN
	N.W/PC	G.W/PC	N.W/CTN	G.W/CTN		
SP-R03-09a	2.03	2.04	20.38	21.26	260x220x485	10

LED STREET LIGHT SLNX 30-200W

L shape adaptor for dia.60 spigot, 90mm pole



Code	Product weight(kg) ±6%		Package weight(kg) ±6%		Carton size (mm)	Qty/CTN
	N.W/PC	G.W/PC	N.W/CTN	G.W/CTN		
SP-R03-09	3.18	3.31	16.53	17.1	550x245x210	5

T shape adaptor for dia.60 spigot, 60mm pole



Code	Product weight(kg) ±6%		Package weight(kg) ±6%		Carton size (mm)	Qty/CTN
	N.W/PC	G.W/PC	N.W/CTN	G.W/CTN		
SP-R03-06	2.63	2.64	15.86	16.69	620x340x220	6

T shape pole mount adaptor for dia.60 spigot, 76mm pole



Code	Product weight(kg) ±6%		Package weight(kg) ±6%		Carton size (mm)	Qty/CTN
	N.W/PC	G.W/PC	N.W/CTN	G.W/CTN		
SP-R03-08	2.94	2.94	29.41	30.71	375x335x470	10

T shape pole mount adaptor for dia.60 spigot, 90mm pole



Code	Product weight(kg) ±6%		Package weight(kg) ±6%		Carton size (mm)	Qty/CTN
	N.W/PC	G.W/PC	N.W/CTN	G.W/CTN		
SP-R03-08a	3.26	3.43	17.15	18.4	555x375x215	5

90 degree two lights adaptor for dia.60 spigot, 90mm pole



Code	Product weight(kg) ±6%		Package weight(kg) ±6%		Carton size (mm)	Qty/CTN
	N.W/PC	G.W/PC	N.W/CTN	G.W/CTN		
SP-R03-13	4.66	4.956	14.86	15.7	720x255x295	3

Triple arm adaptor for dia.60 spigot, 90mm pole



Code	Product weight(kg) ±6%		Package weight(kg) ±6%		Carton size (mm)	Qty/CTN
	N.W/PC	G.W/PC	N.W/CTN	G.W/CTN		
SP-R03-14	4.81	5.187	15.56	16.7	360x235x280	3

LED STREET LIGHT SLNX 30-200W

Quad arm adaptor for dia.60 spigot, 90mm pole



Code	Product weight(kg) ±6%		Package weight(kg) ±6%		Carton size (mm)	Qty/CTN
	N.W/PC	G.W/PC	N.W/CTN	G.W/CTN		
SP-R03-15	6.01	6.58	13.15	14.3	360x360x280	2

Wall mounting adaptor for dia.60mm spigot



Code	Product weight(kg) ±6%		Package weight(kg) ±6%		Carton size (mm)	Qty/CTN
	N.W/PC	G.W/PC	N.W/CTN	G.W/CTN		
SP-R03-18	0.97	1.08	10.76	11.47	590x295x225	10

Corner adaptor for dia.60mm spigot



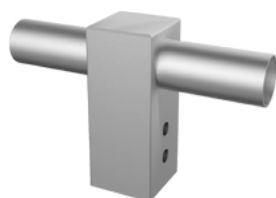
Code	Product weight(kg) ±6%		Package weight(kg) ±6%		Carton size (mm)	Qty/CTN
	N.W/PC	G.W/PC	N.W/CTN	G.W/CTN		
SP-R19-02	2.34	2.63	13.12	14.07	250x188x215	5

L shape pole mount adaptor for dia.60 spigot and 100x100mm square pole



Code	Product weight(kg) ±6%		Package weight(kg) ±6%		Carton size (mm)	Qty/CTN
	N.W/PC	G.W/PC	N.W/CTN	G.W/CTN		
SP-R03-10	3.3	3.44	17.22	17.8	595x254x225	5

T shape pole mount adaptor for dia.60 spigot and 100x100mm square pole



Code	Product weight(kg) ±6%		Package weight(kg) ±6%		Carton size (mm)	Qty/CTN
	N.W/PC	G.W/PC	N.W/CTN	G.W/CTN		
SP-R03-07	3.59	3.78	18.89	19.07	595x365x225	5